

3-Tiered Mini Display Rack Installation Instructions

Atlantis Rail offers a racking system that will allow the showcasing of multiple cable railing mini displays. Each kit includes everything needed to quickly and easily install the tiered rack.

The following guide will take you step-by-step through the process of installing and adding the finishing touches to the 3-tiered mini display rack.

Table of Contents

Tools	1
What's Included	1
Tips for a Successful Installation	1
Cross Beam Installation	2
"L" Bracket Installation	2
Adding the Attachments	2
Mini Display Placement	3

Tools

Required & Recommended



Safety Glasses



Power Drill



#3 Phillips Driver Bit



Drill Bit Extension

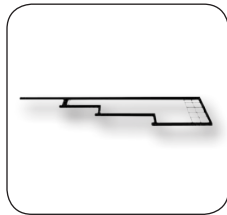

 Short Phillips Head
Screw Driver


Adjustable Wrench

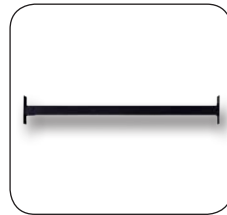


Work Gloves

What's Included



A. Tiered Side Panel (2)



B. Cross Beam (4)



C. Base Plate (1)



D. Literature Basket (1)



E. "L" Bracket (6)



F. Machine Screw (6)



G. Sheet Metal Screw (16)



H. Banner Mount (1)


 I. Cable Railing
Center Banner (1)


J. Base Sign (1)



K. Packet of Velcro (1)



L. Nut (6)

Tips for a Successful Installation

- Read the instructions completely before beginning the installation.
- Check carton(s) to determine part count is complete.



ALWAYS USE WORK GLOVES AND WEAR SAFETY GLASSES TO PROTECT YOUR HANDS AND EYES.

Cross Beam Installation

Locate Holes & Install Cross Beams

Locate the pre-drilled holes on one (1) of the tiered side panels (Component A). On a flat surface lay down the tiered side panel with the pre-drilled holes facing up.

Using sheet metal screws (Component G) provided, attach the cross beams (Component B) to the tiered side panel laying down (See Figure A).



DRIVING A SHEET METAL SCREW IN AND OUT OF THE PRE-DRILLED HOLES WILL CREATE A THREAD AND MAKE INSTALLING THE CROSS BEAMS EASIER. WHEN INSTALLING THE CROSS BEAMS, DO NOT DRIVE THE SHEET METAL SCREWS ALL THE WAY IN UNTIL ALL FOUR (4) SCREWS HAVE BEEN INSTALLED.

Lay down the other tiered side panel with the pre-drilled holes facing up. Place the tiered side panel with the pre-attached cross beams on top of the other tiered side panel. Match the cross beam screw holes with the pre-drilled holes on the tiered side panel (See Figure B). Attached the cross beams using the supplied sheet metal screws. Now fully tighten all four (4) sheet metal screws on each cross beam.

Install Feet (available upon request)

With the cross beams securely fastened to the tiered side panels and the display still laying down, locate the pre-threaded holes on the underside of the display rack. Thread the feet into the holes and tighten. If the rack is unbalanced, adjust the feet accordingly to level.

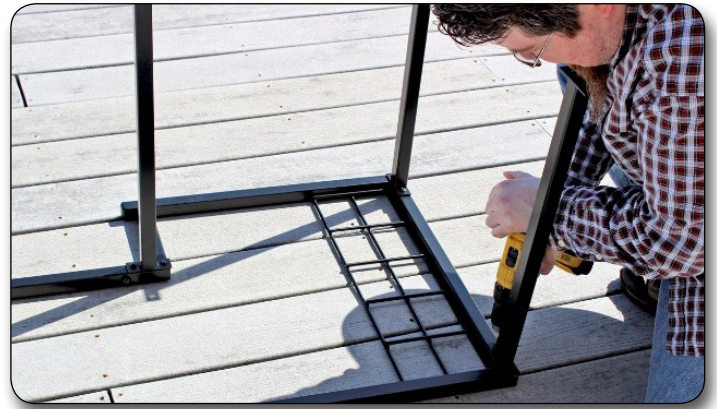


Figure A. Using sheet metal screws, attach the cross beams.

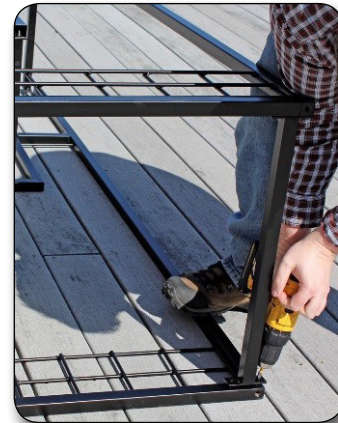


Figure B. Match the cross beam screw holes with the pre-drilled holes on the tiered side panel.

“L” Bracket Installation

Locate Holes & Install “L” Brackets

Locate the pre-drilled, threaded holes on the front of the tiered side panels.

Using the provided machine screws (Component F) and nuts (Component L), install the “L” brackets (Component E, See Figure C). The “L” bracket is slotted for height adjustability to accommodate the mini display bases.



DO NOT FULLY TIGHTEN THE “L” BRACKETS TO THE FRAME.



Figure C. Install the “L” brackets using the provided machine screws and nuts. Do not fully tighten the brackets to the frame.

Adding the Attachments

Add the Base Plate

Place the base plate (Component C) on top of the bottom cross beams (See Figure D).

Add the Signage

Place the banner mount (Component H) on top of the top cross beam and center. Next, place the cable railing center banner (Component I) into the banner mount and center.



Figure D. Add the base plate on top of the bottom cross beams.



THE CENTER OF THE CABLE RAILING CENTER BANNER IS THE MIDDLE OF THE HANDISWAGE™ LOGO.

Using the supplied packet of Velcro (Component K), attach the base sign (Component J) to the front, under the lowest tier.

Attach the Literature Basket

Hook the literature basket (Component D) to the welded support rod on the side of the rack, under the top tier (See Figure E).



Figure E. Hook the literature basket to the welded support rod on the side of the rack, under the top tier.

Mini Display Placement

Add Mini Displays

Slide the mini display under the loosely installed “L” brackets and center. Once the mini display is centered on the tiered rack, position the “L” brackets so they are flush with the base of the mini display (See Figure F). Using a short Phillips head screw driver and adjustable wrench, tighten down the “L” bracket machine screws.



Figure F. Position the “L” brackets so they are flush with the base of the mini display and tighten the machine screws.

