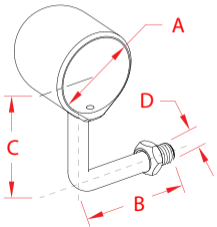


# RAIL END SUPPORT - LH

**316 STAINLESS STEEL**



ITEM	SIZE	A	B	C	D	WT
						(lb)
<b>S0901-0402</b>	<b>1-1/2"</b>	1.51"	3.00"	3.09"	0.50"	0.66
<b>S0902-0402</b>	<b>2"</b>	2.01"	3.00"	3.38"	0.50"	0.82

**NOTE:**

**Patented end support designed for continuous handrail. Use end support with either the rail support "flat base" or "2 inch tube mount base" (above), depending on application. The left side is closed so that the handrail is captured between the LH and RH end supports. 360 degree adjustable handrail support includes lock nut and one set screw to prevent movement of handrail.**

