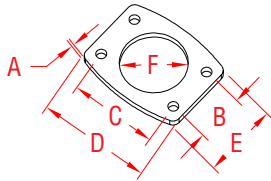


# RAIL BASE SHIM

316 STAINLESS STEEL



ITEM	SIZE	A	B	C	D	E	F	WT
								(lb)
<b>S0950-0004</b>	2"	1/16"	1.60"	2.91"	3.75"	3.00"	2.13"	0.10

**NOTE:**

**Shims fit under bases S0950-0001, S0950-0003 or S0940-1005. Many surfaces are not exactly level and one or more shims under some bases allow posts to be elevated, creating a perfectly aligned top rail.**