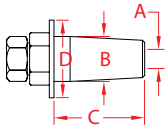
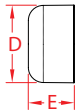


# RAILEASY™ FLUSH FITTING

316L STAINLESS STEEL



ITEM	A	B	C	D	E	WT
	(cable)					(lb)
<b>S0981-P004</b>	<b>5/32"</b>	<b>0.43"</b>	<b>0.84"</b>	<b>0.75"</b>	<b>0.45"</b>	<b>0.05</b>

**NOTE:**

**The RailEasy™ Flush Fitting is perfect for architectural cable railing applications where “through post” hardware is desired for minimal obstruction. Fitting uses mechanical swage design to attach to cable. Affix the supplied stainless steel deluxe cap to the end for a finished look.**

