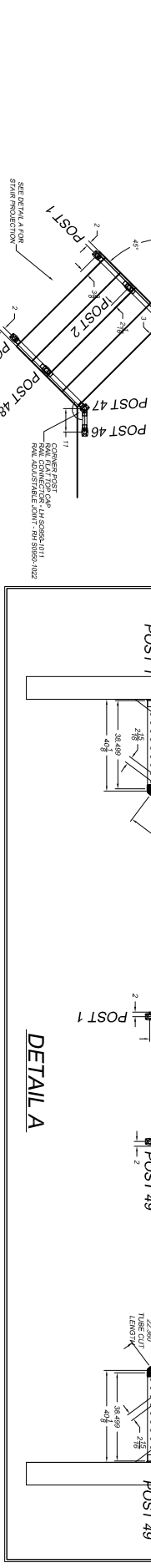
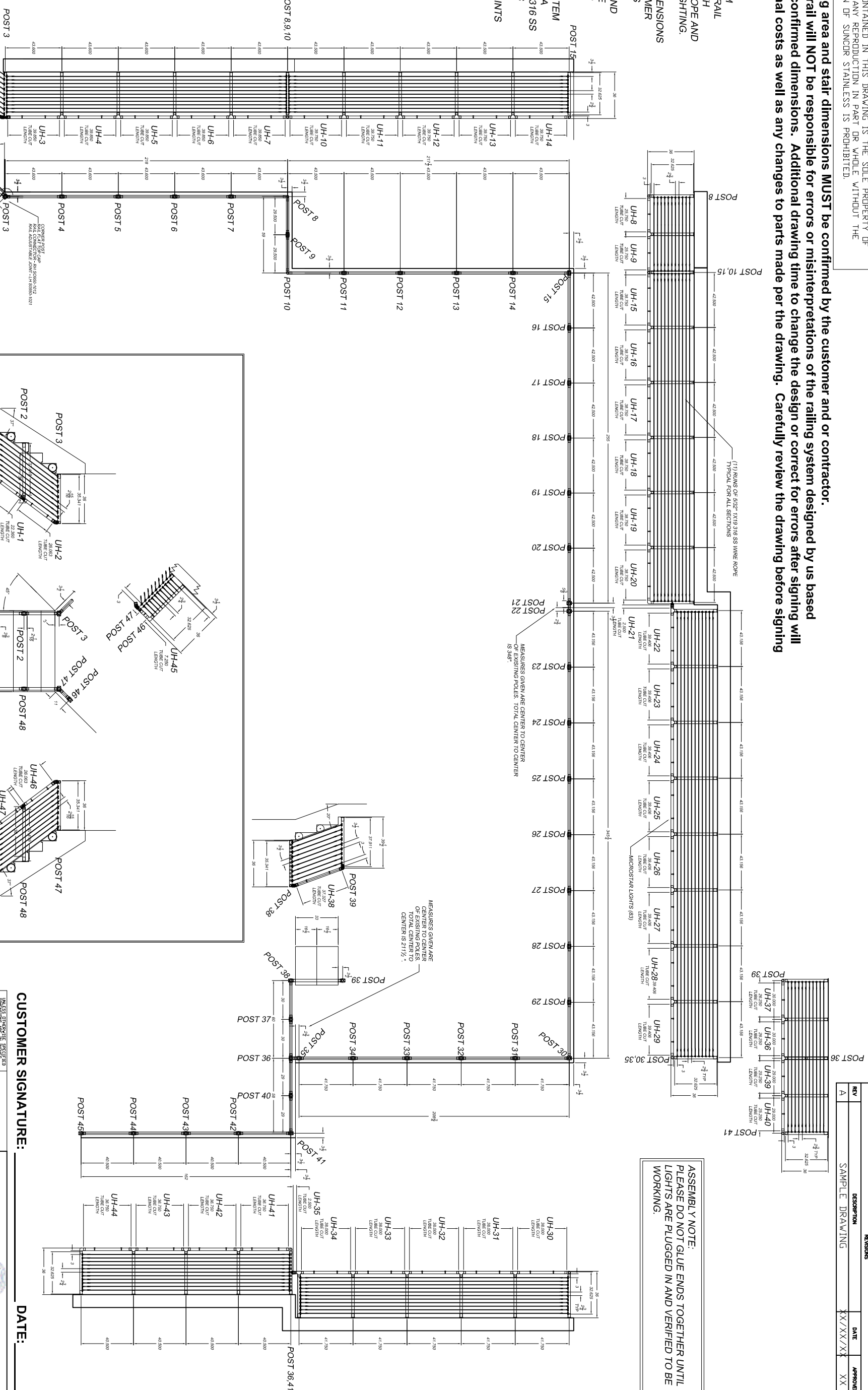


THE INFORMATION CONTAINED IN THIS DRAWING IS THE SOLE PROPERTY OF SUNCOR STAINLESS. ANY REPRODUCTION IN PART OR WHOLE WITHOUT THE WRITTEN PERMISSION OF SUNCOR STAINLESS IS PROHIBITED.

Deck or mounting area and stair dimensions MUST be confirmed by the customer and or contractor. Suncor/Atlantis rail will NOT be responsible for errors or misinterpretations of the railing system designed by us based upon customer confirmed dimensions. Additional drawing time to change the design or correct for errors after signing will result in additional costs as well as any changes to parts made per the drawing. Carefully review the drawing before signing and accepting.

- NOTES:
1. HAND RAIL SYSTEM CONSISTING OF SUNRAIL NAUTILUS STYLE WITH HORIZONTAL WIRE ROPE AND WITH MICROSTAR LIGHTING.
 2. DRAWING AND DIMENSIONS BASED UPON CUSTOMER SUPPLIED DRAWINGS
 3. ALL DIMENSIONS AND RAILING DETAILS ARE PENDING CUSTOMER APPROVAL
 4. 3/8" HAND RAIL SYSTEM CONSISTING OF 2" DIA BRUSHED 16 GAUGE 316 SS TUBING, CAST 316 SS FITTINGS, EPOXY CONNECTIONS AT JOINTS

ASSEMBLY NOTE:
PLEASE DO NOT GLUE ENDS TOGETHER UNTIL LIGHTS ARE PLUGGED IN AND VERIFIED TO BE WORKING.



CUSTOMER SIGNATURE: _____ **DATE:** _____

ATLANTIS RAIL SYSTEMS

ATLANTIS NAUTILUS 1 COMPLEX
SAMPLE DRAWING

DESIGNER	DATE	APPROVED
REV A	XXXX/XX/XX	XX

FINISH	BRUSHED	WELD ENG	SCALE	N/A
MATERIAL	316SS	DRILL ENG	SIZE	FSCAL NO.
DRIVER	XXXX	DATE	ORDER NO.	XXXXXX
CHECKED	XXXX/XX/XX	DATE	SCALE	N/A

UNLESS OTHERWISE SPECIFIED, DIMENSIONS ARE IN MILLIMETERS AND DECIMALS ARE TO 0.001 UNLESS OTHERWISE SPECIFIED.

FOR QUOTED PRICING, PLEASE REFER TO THE SAMPLE DRAWING FOR DIMENSIONS AND MATERIALS.

ORDER NO. XXXXXX

SHEET 1 OF 1