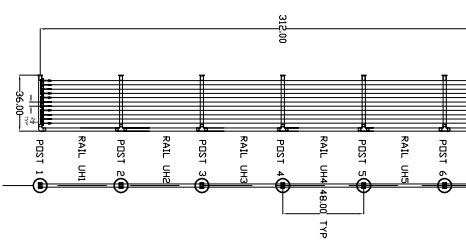
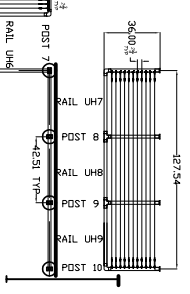
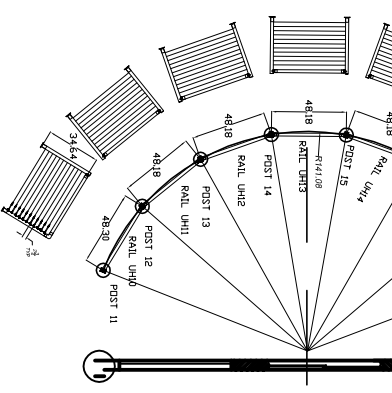
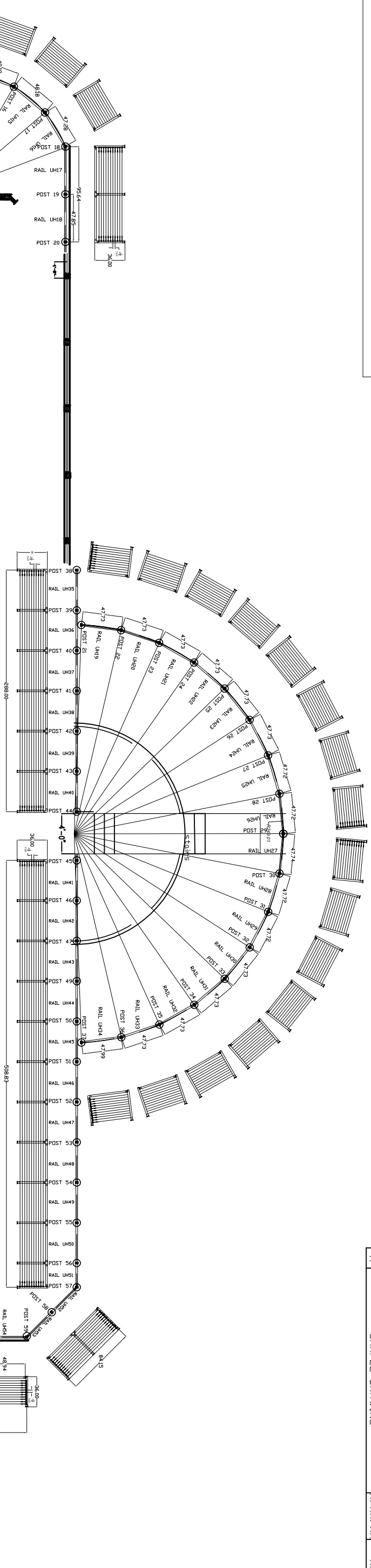


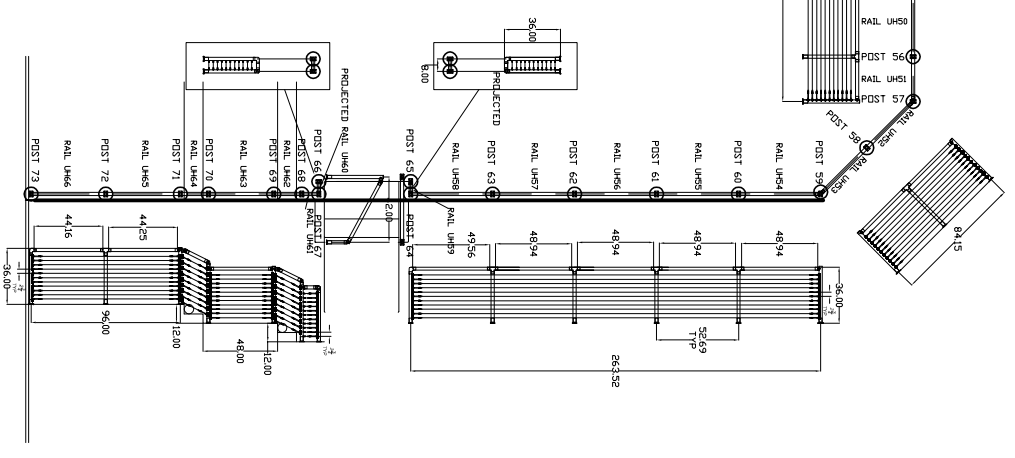
THE INFORMATION CONTAINED IN THIS DRAWING IS THE SOLE PROPERTY OF SUNCOR STAINLESS. ANY REPRODUCTION IN PART OR WHOLE WITHOUT THE WRITTEN PERMISSION OF SUNCOR STAINLESS IS PROHIBITED.

REV	DESCRIPTION	DATE	APPROVED
A	SAMPLE DRAWING	X/XX/XX	XX



- NOTES:
1. HAND RAIL SYSTEM CONSISTING OF SUNRAIL STYLE WITH HORIZONTAL WIRE ROPE.
 2. DRAWING AND DIMENSIONS BASED UPON CUSTOMER SUPPLIED DRAWINGS
 3. ALL DIMENSIONS AND RAILING DETAILS ARE PENDING CUSTOMER APPROVAL
 4. 36" HAND RAIL SYSTEM CONSISTING OF 2" DIA POLISHED 16 GAUGE 316 SS TUBING, CAST 316 SS FITTINGS, EPOXY CONNECTIONS AT JOINTS
 5. CABLE SPACING IS 2.818" C/L. TYPICAL OF ALL SECTIONS.

Deck or mounting area and stair dimensions MUST be confirmed by the customer and or contractor. Suncor/Atlantis rail will NOT be responsible for errors or misinterpretations of the railing system designed by us based upon customer confirmed dimensions. Additional drawing time to change the design or correct for errors after signing will result in additional costs as well as any changes to parts made per the drawing. Carefully review the drawing before signing and accepting.



CUSTOMER SIGNATURE: _____ DATE: _____



ATLANTIS NAUTILUS 1 RADIUS
SAMPLE DRAWING

UNLESS OTHERWISE SPECIFIED DIMENSIONS ARE IN INCHES AND TOLERANCES ARE: FRACTIONS DECIMALS ANGLES 1/16" .005 1/2°		CAN GUARANTEED SPACING 20 MIN MINIMUM SPACING	
MATERIAL: 316SS	APPROVALS: [Signature]	DATE: XX/XX/XX	
FINISH: ELECTRO-POLISHED	CHECKED: [Signature]	DATE: XX/XX/XX	
SCALE: 1/4" = 1'-0"	DESIGNED: [Signature]		
SIZE: F304 NO.	ORDER NO.: XXXXX	REV: A	
SCALE: 1/4" = 1'-0"	DATE FILED: XXXXXXXXXX	SHEET: 1 OF 1	