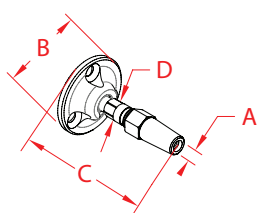


RAILEASY™ SWIVEL END-FLAT

316L STAINLESS STEEL



ITEM	A	B	C	D	FAST	QTY	WT
------	---	---	---	---	------	-----	----

(cable)

(lb)

2 PACK

C0981-S024

5/32"

1.50"

2.26"

0.31"

#8

2

0.31

10 PACK

C0981-S104

5/32"

1.50"

2.26"

0.31"

#8

10

1.43

NOTE:

Patented swivel end is used for cable railing applications. Swivel end is used in conjunction with RailEasy™ Tensioner in order to tension cable. Patented slotted base allows for angles up to 45 degrees and is surface mounted with three #8, 1-1/2" stainless steel screws.

