



ATLANTIS RAIL Contact Information:

Atlantis Rail Systems

70 Armstrong Road
Plymouth, MA 02360

3900 Civic Center Drive
North Las Vegas, NV 89030

☎ (800) 541-6829 or ☎ (508) 732-9191

☎ (508) 732-9798

🌐 www.atlantisrail.com

SunRail™ Fascia Mount Bracket Installation Instructions

Atlantis Rail offers a fascia mounting option when installing a SunRail system with stainless steel posts. This bracket is designed to be combined with the Atlantis Rail Mounting Base or Rail Adjustable Base. It is used when a fascia mounting system is desired. The bases fit perfectly into the top recess and are held by four (4) screws. For a safe installation, use prescribed 1/2" machine screws for bolting through joists.

The following guide will take you step-by-step through the process of installing an SunRail Fascia Mount Bracket.

Table of Contents

Tools	1
Tips for a Successful Installation	1
Component	1
Additional Components	2
Dry Fitting the Railing Section	2
Making Necessary Adjustments to Deck	2
Fastening Fascia Mount Bracket	2
SunRail Product Specification	2

Tools

Required & Recommended



Power Drill



Phillips Driver Bit



Pencil



Work Gloves



Safety Glasses

Tips for a Successful Installation

- Read the instructions completely before beginning the installation.
- Check carton(s) to determine part count is complete.
- Always wear personal protection equipment; safety glasses, work gloves, etc.



ALWAYS USE WORK GLOVES AND WEAR SAFETY GLASSES TO PROTECT YOUR HANDS AND EYES.

Component



S0950-0002

Fascia Mount Bracket

Additional Components



Rail Mounting Base



Rail Adjustable Base

Dry Fitting the Railing Section

Begin by dry fitting the railing section as outlined in the SunRail installation instructions. The Fascia Mount Bracket (See *Figure A*) matches the profile of the Rail Mounting Base (S0950-0001) and Rail Adjustable Base (S0950-0003). When appropriately dry fitted, leveled and plumbed, mark the four (4) holes on the top of the Rail Mounting Base as outlined in the SunRail installation instructions (See *Figure B*).

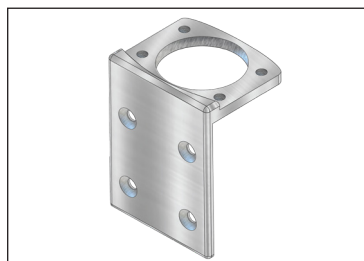


Figure A. (Left) Fascia Mount Bracket (S0950-0002).

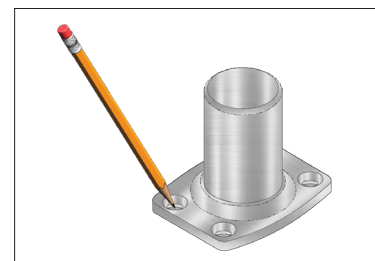


Figure B. (Right) After dry fitting, mark holes using the Rail Mounting Base (S0950-0001).

Making Necessary Adjustments to the Deck

Sometimes when using the Fascia Mount Bracket, you may find it necessary to adjust your deck in some way due to the deck overhang. The most common modifications are blocking out the fascia to meet the edge of the decking, or notching in the decking to meet the fascia. Whatever your preference, make sure that this information is covered when working with your Engineer.

Fastening Fascia Mount Bracket

There are two methods for fastening the Fascia Mount Bracket. You can use four (4) 4-1/2" lag screws (not included). These screw through the side of the fascia bracket and into the fascia board (See *Figure C*). If you prefer through-bolting, use four (4) 4-1/2" machine screws, nuts and washers (included). Mark and drill through the fascia screws, nuts and washers until tight.

When the fascia mount is securely fastened, attach the Rail Mounting Base using four (4) 5/16-18 x 3/4" long machine screws (included) into the top of the bracket (See *Figure D*). Tighten down, shim where necessary and install the rail as outlined in the SunRail installation instructions.

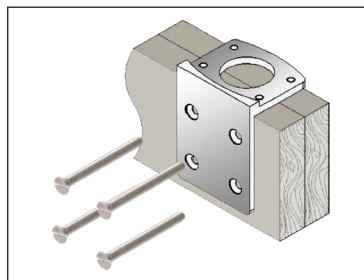


Figure C. (Left) Install four (4) 1/2" lag bolts.

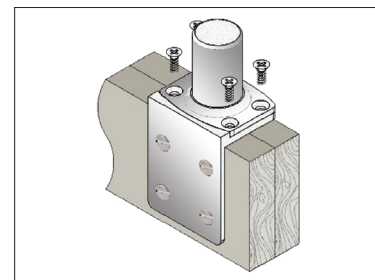


Figure D. (Right) Attach Rail Mounting Base with four (4) 5/16" x 1/2" machine screws.

SunRail Product Specification

Component

Product	Description	Dimensions	Fasteners	Notes
S0950-0002	Fascia Mount Bracket	2" 316 stainless steel	--	--
S0950-0001	Rail Mounting Base	2" 316 stainless steel	--	--
S0950-0006	Concrete Mounting Base	2" 316 stainless steel	--	--