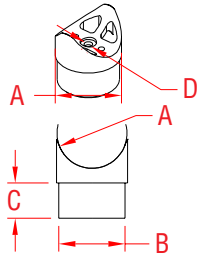


RAIL CENTER SUPPORT

316 STAINLESS STEEL



ITEM

SIZE

A

B

C

D

WT

(lb)

POLISHED

S0902-0304

2"

2.00"

1.88"

1.00"

0.26"

0.35

BRUSHED

S0902-0304-B

2"

2.00"

1.88"

1.00"

0.26"

0.35

NOTE:

This part is attached to the outside of 2" tubing. Installation requires a rivet nut placed into the tubing, to which the support is attached by a screw (supplied with complete systems). Support is used where a continuous handrail is required. Fitting is precision cast for a seamless appearance. Requires rail adhesive (supplied with complete systems) to bond with tubing.