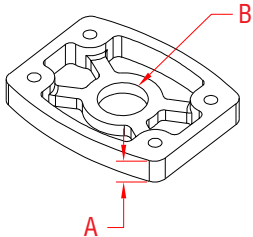


RAIL BASE FLAT MOUNT

316 STAINLESS STEEL



ITEM

A

B

WT

(lb)

POLISHED

S0950-0006

0.50"

0.94"

0.62

NOTE:

Use base flat mount to secure a railing system to a concrete surface. A concrete anchor bolt (not supplied) is used to secure the mount. The rail base (S0950-0001, S0950-0003 or S0940-1005) is secured to the base plate using 4 machine screws (screws supplied with complete systems).

