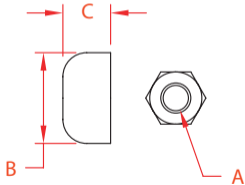


DELUXE COVER NUT SET

316 STAINLESS STEEL



ITEM

A

B

C

THREAD

QTY.

WT

(thread)

C0307-U007-2

1/4"

0.75"

0.44"

Right Hand/UNF

2

0.04

NOTE:

Designed for use with HandiSwage™ Studs and RailEasy™ Stud Assembly. Stainless Nut Sets are perfect for cable railing systems where "through-post" hardware is desired for minimal obstruction. Affix to end of stud for a finished look. Requires HandiSwage™ Combination Wrench Set.

HANDISWAGE™