

THE INFORMATION CONTAINED IN THIS DRAWING IS THE SOLE PROPERTY OF SUNCOR STAINLESS. ANY REPRODUCTION IN PART OR WHOLE WITHOUT THE WRITTEN PERMISSION OF SUNCOR STAINLESS IS PROHIBITED.

Deck or mounting area and stair dimensions **MUST** be confirmed by the customer and or contractor. It shall be the customer's responsibility to review the drawing(s) for accuracy.

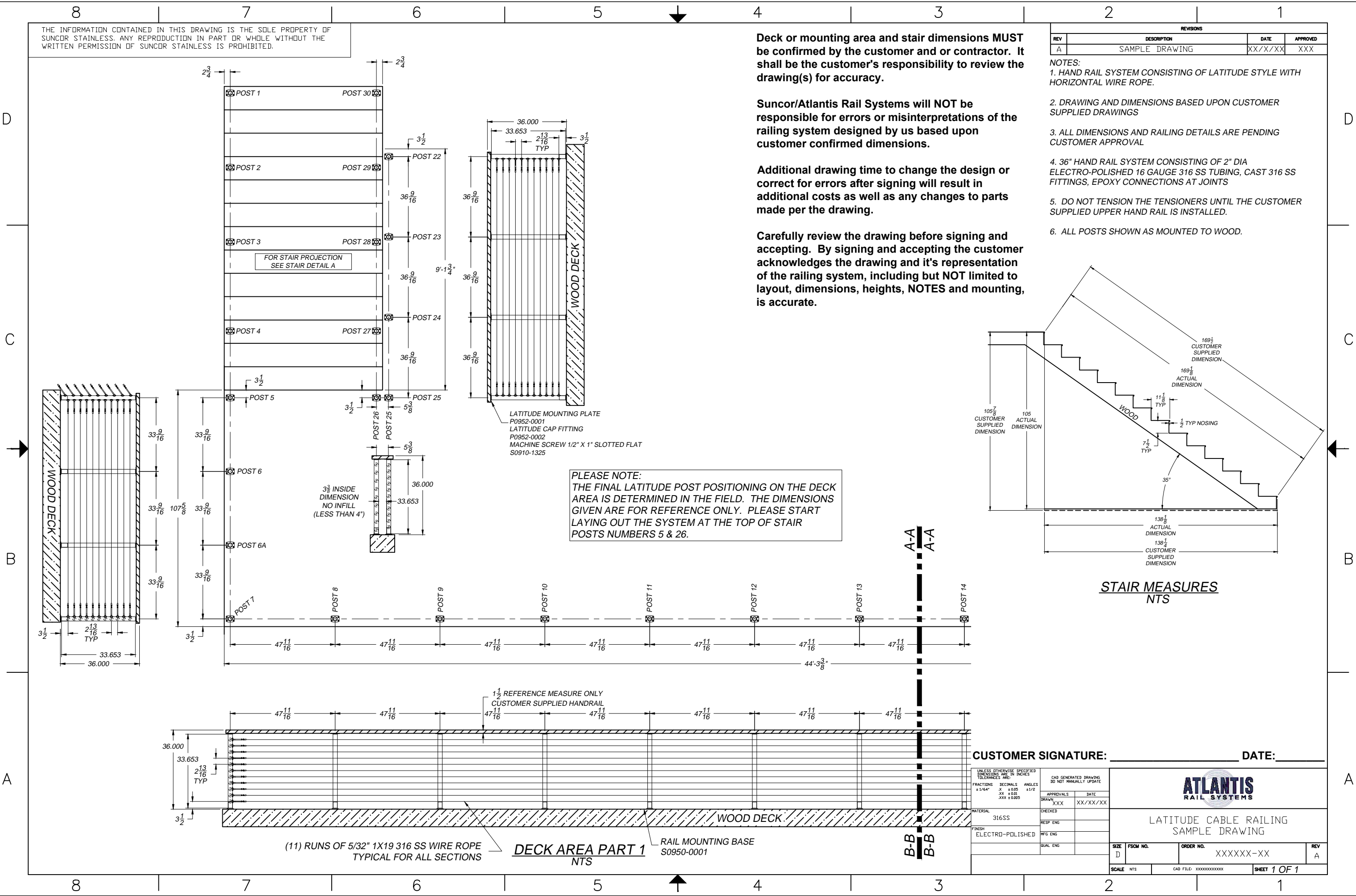
Suncor/Atlantis Rail Systems will **NOT** be responsible for errors or misinterpretations of the railing system designed by us based upon customer confirmed dimensions.

Additional drawing time to change the design or correct for errors after signing will result in additional costs as well as any changes to parts made per the drawing.

Carefully review the drawing before signing and accepting. By signing and accepting the customer acknowledges the drawing and it's representation of the railing system, including but **NOT** limited to layout, dimensions, heights, **NOTES** and mounting, is accurate.

REVISIONS			
REV	DESCRIPTION	DATE	APPROVED
A	SAMPLE DRAWING	XX/X/XX	XXX

- NOTES:
- HAND RAIL SYSTEM CONSISTING OF LATITUDE STYLE WITH HORIZONTAL WIRE ROPE.
  - DRAWING AND DIMENSIONS BASED UPON CUSTOMER SUPPLIED DRAWINGS
  - ALL DIMENSIONS AND RAILING DETAILS ARE PENDING CUSTOMER APPROVAL
  - 36" HAND RAIL SYSTEM CONSISTING OF 2" DIA ELECTRO-POLISHED 16 GAUGE 316 SS TUBING, CAST 316 SS FITTINGS, EPOXY CONNECTIONS AT JOINTS
  - DO NOT TENSION THE TENSIONERS UNTIL THE CUSTOMER SUPPLIED UPPER HAND RAIL IS INSTALLED.
  - ALL POSTS SHOWN AS MOUNTED TO WOOD.

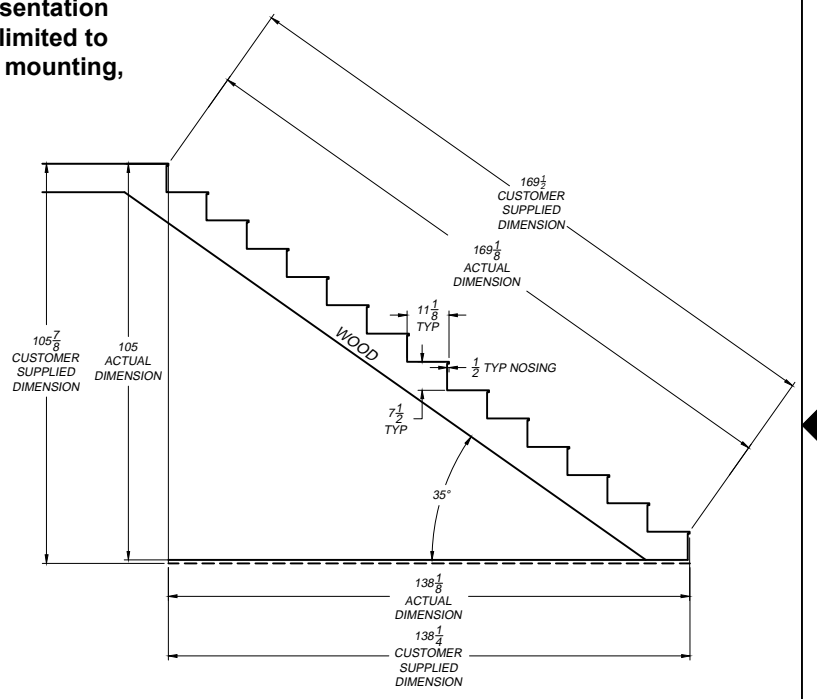


FOR STAIR PROJECTION SEE STAIR DETAIL A

LATITUDE MOUNTING PLATE P0952-0001  
 LATITUDE CAP FITTING P0952-0002  
 MACHINE SCREW 1/2" X 1" SLOTTED FLAT S0910-1325

PLEASE NOTE:  
 THE FINAL LATITUDE POST POSITIONING ON THE DECK AREA IS DETERMINED IN THE FIELD. THE DIMENSIONS GIVEN ARE FOR REFERENCE ONLY. PLEASE START LAYING OUT THE SYSTEM AT THE TOP OF STAIR POSTS NUMBERS 5 & 26.

3/8" INSIDE DIMENSION NO INFILL (LESS THAN 4")



STAIR MEASURES NTS

(11) RUNS OF 5/32" 1X19 316 SS WIRE ROPE TYPICAL FOR ALL SECTIONS

DECK AREA PART 1 NTS

RAIL MOUNTING BASE S0950-0001

CUSTOMER SIGNATURE: \_\_\_\_\_ DATE: \_\_\_\_\_

UNLESS OTHERWISE SPECIFIED DIMENSIONS ARE IN INCHES TOLERANCES ARE:			CAD GENERATED DRAWING DO NOT MANUALLY UPDATE	
FRACTIONS	DECIMALS	ANGLES	APPROVALS	DATE
±1/64"	.X ±0.05	±1/2	DRAWN XXX	XX/XX/XX
	.XX ±0.01		CHECKED	
	.XXX ±0.005		RESP ENG	
MATERIAL			MFG ENG	
316SS			QUAL ENG	
FINISH				
ELECTRO-POLISHED				



LATITUDE CABLE RAILING SAMPLE DRAWING

SIZE D	FSCM NO.	ORDER NO. XXXXXX-XX	REV A
SCALE NTS	CAB FILE: xxxxxxxxxxxx		SHEET 1 OF 1