

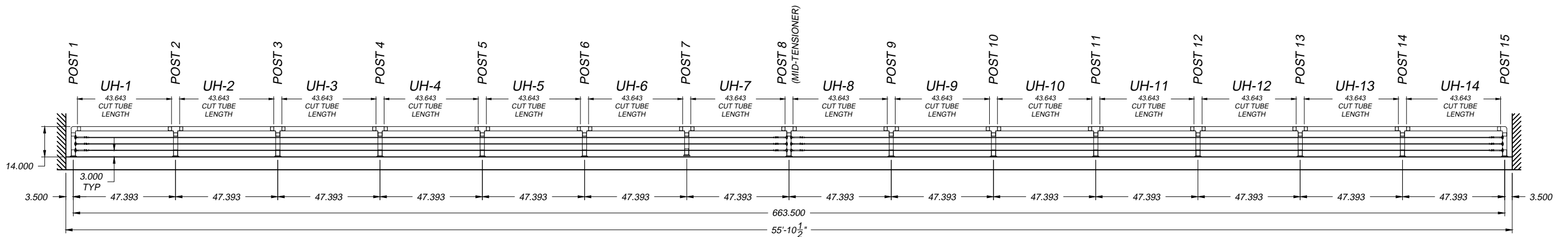
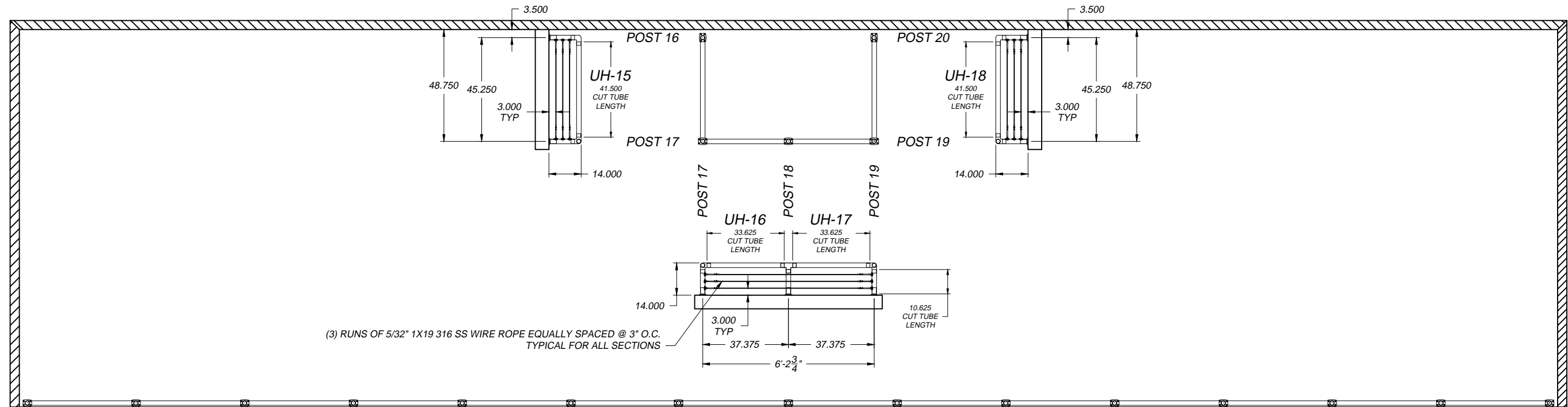
THE INFORMATION CONTAINED IN THIS DRAWING IS THE SOLE PROPERTY OF SUNCOR STAINLESS. ANY REPRODUCTION IN PART OR WHOLE WITHOUT THE WRITTEN PERMISSION OF SUNCOR STAINLESS IS PROHIBITED.

**Deck or mounting area and stair dimensions MUST be confirmed by the customer and or contractor. Suncor/Atlantis Rail will NOT be responsible for errors or misinterpretations of the railing system designed by us based upon customer confirmed dimensions. Additional drawing time to change the design or correct for errors after signing will result in additional costs as well as any changes to parts made per the drawing. Carefully review the drawing before signing and accepting.**

**NOTES:**

- HAND RAIL SYSTEM CONSISTING OF SUNRAIL STYLE WITH HORIZONTAL WIRE ROPE.
- DRAWING AND DIMENSIONS BASED UPON CUSTOMER SUPPLIED DRAWINGS
- ALL DIMENSIONS AND RAILING DETAILS ARE PENDING CUSTOMER APPROVAL
- 14" HAND RAIL SYSTEM CONSISTING OF 2" DIA POLISHED 16 GAUGE 316 SS TUBING, CAST 316 SS FITTINGS, EPOXY CONNECTIONS AT JOINTS

REVISIONS			
REV	DESCRIPTION	DATE	APPROVED
A	SAMPLE DRAWING	XX/XX/XXXX	XXX



CUSTOMER SIGNATURE: \_\_\_\_\_ DATE: \_\_\_\_\_

UNLESS OTHERWISE SPECIFIED DIMENSIONS ARE IN INCHES TOLERANCES ARE:			CAD GENERATED DRAWING DO NOT MANUALLY UPDATE	
FRACTIONS	DECIMALS	ANGLES	APPROVALS	DATE
±1/64"	.X ±0.05	±1/2	DRAWN XXX	XX/XX/XXXX
	.XX ±0.01		CHECKED	
	.XXX ±0.005		RESP ENG	
MATERIAL	316SS		MFG ENG	
FINISH	POLISHED		QUAL ENG	

**ATLANTIS RAIL SYSTEMS**

SUNRAIL CABLE RAILING - CUSTOM HEIGHT SAMPLE DRAWING

SIZE D	FORM NO.	ORDER NO. XXXXXX-XX	REV A
SCALE NTS	CAB FILE: xxxxxxxxxxxx		SHEET