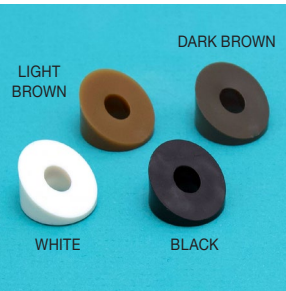
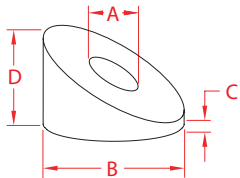


PLASTIC STAIR SPACER



PLASTIC



ITEM	A	DEGREE	B	C	D	QTY	WT
			(size)				(lb)
BLACK - 2 PACK							
C0841-BK30-2	1/4"	30°	0.75"	0.07"	0.50"	2	0.01
C0841-BK34-2	1/4"	34°	0.75"	0.004"	0.50"	2	0.01
C0841-BK38-2	1/4"	38°	0.75"	N/A	0.59"	2	0.01
DARK BROWN - 2 PACK							
C0841-BR30-2	1/4"	30°	0.75"	0.07"	0.50"	2	0.01
C0841-BR34-2	1/4"	34°	0.75"	0.004"	0.50"	2	0.01
C0841-BR38-2	1/4"	38°	0.75"	N/A	0.59"	2	0.01
LIGHT BROWN - 2 PACK							
C0841-LB30-2	1/4"	30°	0.75"	0.07"	0.50"	2	0.01
C0841-LB34-2	1/4"	34°	0.75"	0.004"	0.50"	2	0.01
C0841-LB38-2	1/4"	38°	0.75"	N/A	0.59"	2	0.01
WHITE - 2 PACK							
C0841-WH30-2	1/4"	30°	0.75"	0.07"	0.50"	2	0.01
C0841-WH34-2	1/4"	34°	0.75"	0.004"	0.50"	2	0.01
C0841-WH38-2	1/4"	38°	0.75"	N/A	0.59"	2	0.01

NOTE:

Use in conjunction with the RailEasy™ Stud Assembly or HandiSwage™ Studs to achieve angled cable runs on stairs. Install one of our cover nut options (sold separately) on the end of the threaded stud for a finished look.