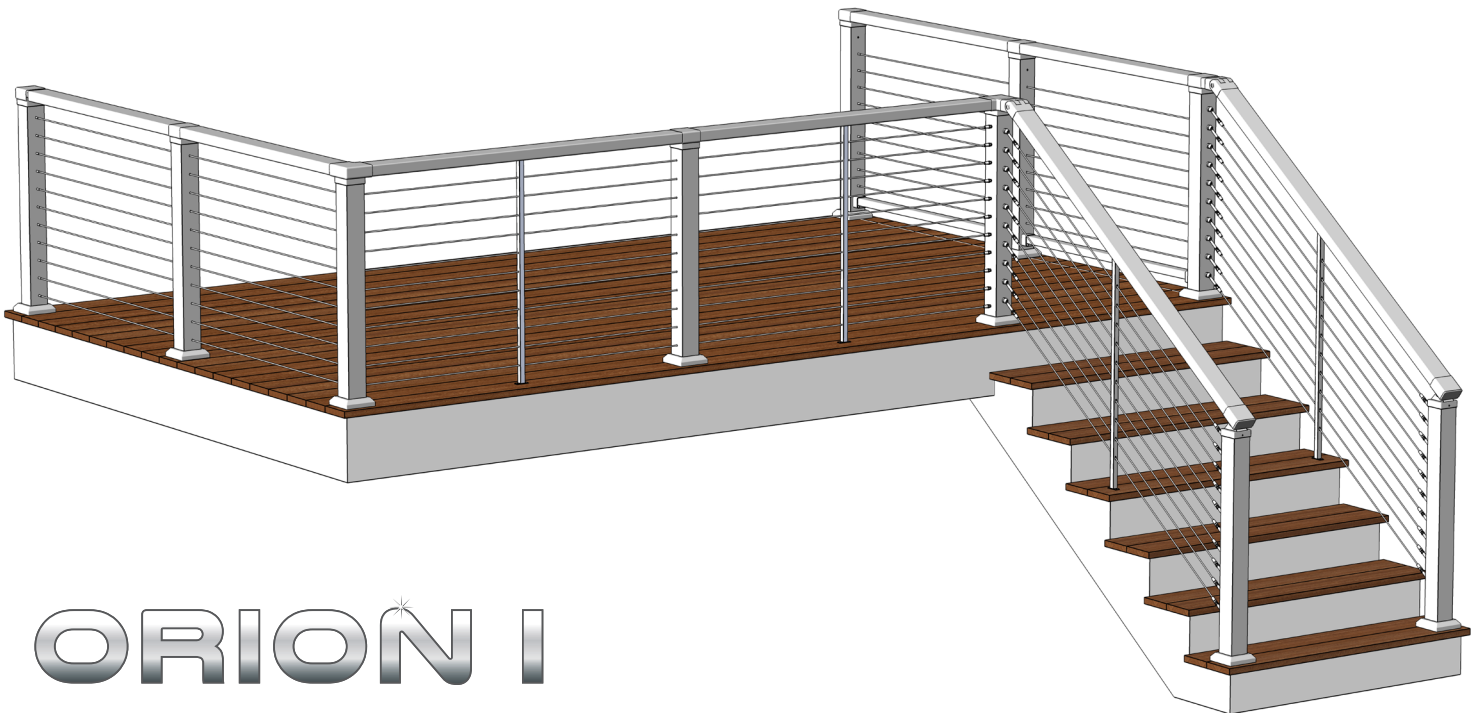


ORION I CABLE RAILING SYSTEM

ORION I System

Powder-Coated Aluminum Railing System with a Flat Top Rail & Stainless Steel Cable Infill



ORION I

Cost: Four dollar signs of varying sizes, indicating a range of costs.

Standard Color Options:

Black (-BK), Bronze (-BZ), White (-WH)



Black



Bronze



White

Powder Coat Finish: Matte/Textured



TOUCH-UP PAINT, 6 oz.

Black (A0906-P052-BK)
Bronze (A0906-P052-BZ)
White (A0906-P052-WH)

Use Atlantis touch-up paint to fix any scratches which may occur during the installation process.

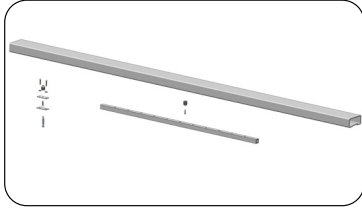
ORION I Cable Railing System

The ORION I System features a powder-coated aluminum framework combined with horizontal stainless steel cable infill. The framework is made up of 3" x 3" posts and a flat continuous top rail. The cable infill consists of HandiSwage™ fittings and 1/8" cable. The straight and stair rail kits are available in 6' lengths and include a top rail, pre-drilled stabilizer, support block assembly and connectors. Post kits come pre-drilled for 2 7/8" cable spacing in heights of 36" or 42". The simple design of the top rail allows installers to handle a variety of rail transitions using a small set of adaptive rail fittings and common installation tools.

The ORION I System is offered in a matte textured powder coat finish of black, bronze and white (featured to the left). Atlantis touch-up paint is also available in these colors and finish to fix any scratches that may occur during installation.

ORION I CABLE RAILING SYSTEM

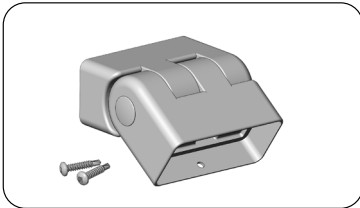
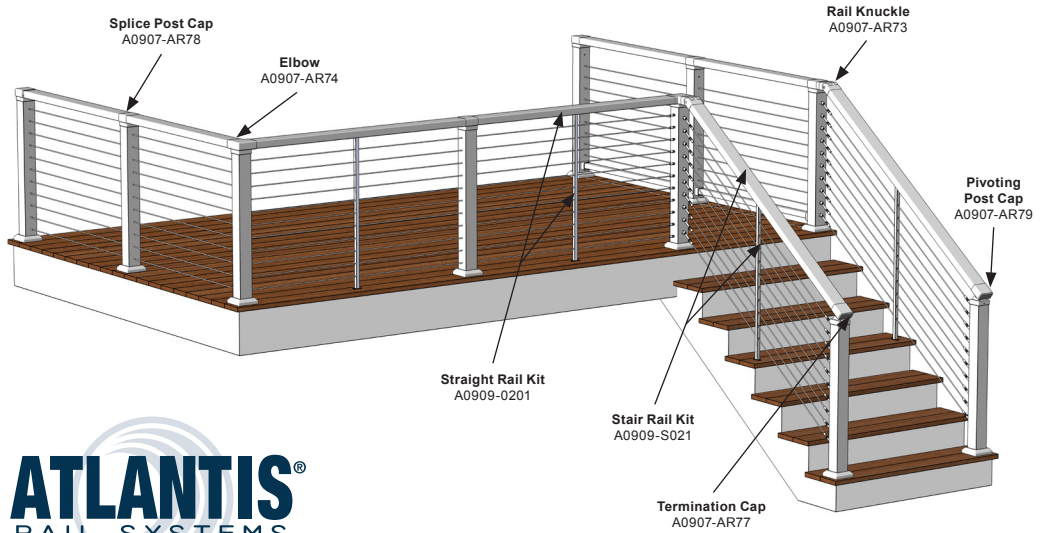
ORION I



Rail Kits

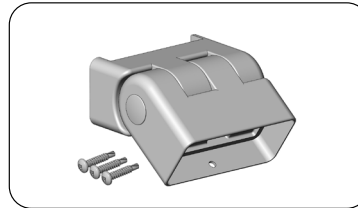
Straight Rail Kit (A0909-0201-XX)
Stair Rail Kit (A0909-S021-XX)

Straight and stair rail kits are offered in 6' lengths and include top rail, pre-drilled stabilizer, support block assembly and connectors. The top rail can be cut and concealed inside associated fittings for a clean look.



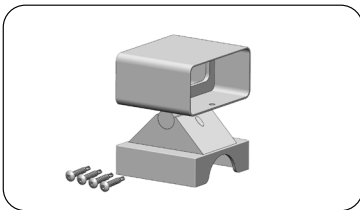
Rail Knuckle (A0907-AR73-XX)

The ORION Stair Knuckle is an adjustable fitting for connecting angled stair rails to 36" height level sections.



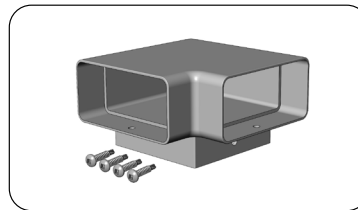
Post Mount Rail Knuckle (A0907-AR76-XX)

The ORION Post Mount Stair Knuckle mounts onto the side of a post and transitions 42" height rail sections to in-line or perpendicular stair rails.



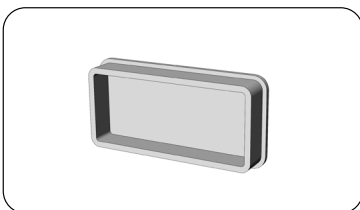
Pivoting Post Cap (A0907-AR79-XX)

The ORION Pivoting Post Cap is typically used in stair applications on mid and bottom stair posts to join top rails.



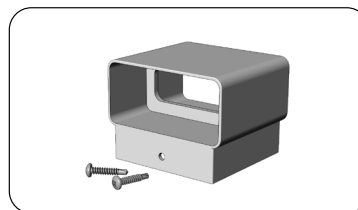
90-Degree Elbow (A0907-AR74-XX)

The ORION 90 Degree Elbow Post Cap is utilized where rail sections meet at a 90 degree angle. 45 and 60 degree elbows are also available.



Termination Cap (A0907-AR77-XX)

The ORION Termination Cap fits into the unused side of a post cap fitting for a finished look.



Post Cap Splice (A0907-AR78-XX)

The ORION Splice Post Cap is commonly used on mid posts to join top rails on level sections. It can also be used on end posts in conjunction with a Termination Cap.

* "XX" in the part number is the color designation. Replace with "BK" for black, "BZ" for bronze and "WH" for white. Powder coated finish is matte/textured.